

DO NOT CHANGE OR DEVIATE FROM THE INFORMATION CONTAINED HEREIN WITHOUT THE WRITTEN CONSENT OF THE ARCHITECT. THE ARCHITECT'S RESPONSIBILITY IS LIMITED TO THE DESIGN OF THE STRUCTURE SHOWN ON THESE DRAWINGS. THE ARCHITECT DOES NOT WARRANT OR GUARANTEE THE ACCURACY OF THE INFORMATION PROVIDED BY OTHERS. THE ARCHITECT SHALL NOT BE RESPONSIBLE FOR THE DESIGN OF ANY OTHER WORK OR FOR THE CONSTRUCTION OF ANY OTHER WORK. THE ARCHITECT SHALL NOT BE RESPONSIBLE FOR THE DESIGN OF ANY OTHER WORK OR FOR THE CONSTRUCTION OF ANY OTHER WORK.

Alajajian, Marcoosi Architects
 815 E. Colorado
 Suite 120
 Glendale
 California 91204
 Tel: (818) 244-5130



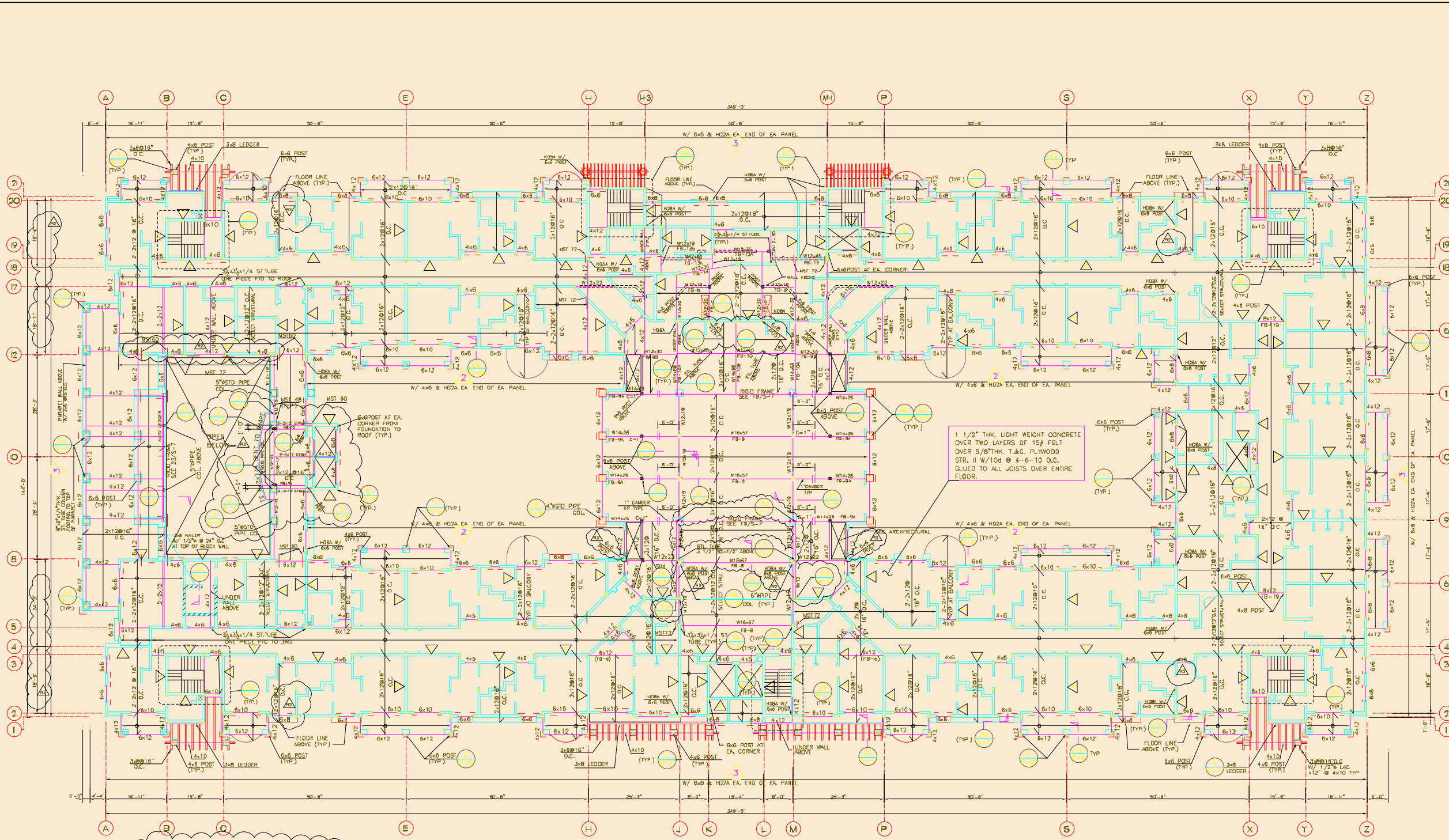
SCALE: 1/8" = 1'-0"
SECOND FLOOR FRAMING PLAN
THE GARDENS AT HILLSBOROUGH
 11918 S. CENTRAL AVE. CHINO, CA.

SHEET TITLE

Bahman Ehsan Inc.
 Consulting Structural Engineers
 2785 W. LINCOLN AVE. #100-4
 SUITE 100-4
 CHINO, CA 91710
 (951) 697-2788

APPROVED: ARPI Y.
 REVISION: 05-22-98
 REVISION: 08-13-98
 REVISION:
 REVISION:
 DRAWN BY: VAR. H.

PRINT DATE: 04-20-98
 JOB NO: 9723
 SHEET NO: 5 OF 7
S-3



SHEAR WALL SCHEDULE

WALL	PLYWOOD	EDGE NAILING	ALLOWABLE SHEAR #/1	SILL NAILING OR LAG SCREW @ A35	SILL BOLT AT FOUNDATION WHERE SHOWN ON PLANS	REMARKS
1	1/2" THK PLYD STR. I	8d @ 6" O.C.	280	1 1/2" @ 24" O.C.	1/2" @ 24" O.C.	(1) (2) (3) (4) (5) (6) (7) (8) (9) (10) (11) (12) (13) (14) (15) (16) (17) (18) (19) (20) (21) (22) (23) (24) (25) (26) (27) (28) (29) (30) (31) (32) (33) (34) (35) (36) (37) (38) (39) (40) (41) (42) (43) (44) (45) (46) (47) (48) (49) (50) (51) (52) (53) (54) (55) (56) (57) (58) (59) (60) (61) (62) (63) (64) (65) (66) (67) (68) (69) (70) (71) (72) (73) (74) (75) (76) (77) (78) (79) (80) (81) (82) (83) (84) (85) (86) (87) (88) (89) (90) (91) (92) (93) (94) (95) (96) (97) (98) (99) (100)
2	1/2" THK PLYD STR. I	8d @ 4" O.C.	430	1 1/2" @ 16" O.C. STAGG. A35 @ 12" O.C. (ONE)	1/2" @ 16" O.C.	(1) (2) (3) (4) (5) (6) (7) (8) (9) (10) (11) (12) (13) (14) (15) (16) (17) (18) (19) (20) (21) (22) (23) (24) (25) (26) (27) (28) (29) (30) (31) (32) (33) (34) (35) (36) (37) (38) (39) (40) (41) (42) (43) (44) (45) (46) (47) (48) (49) (50) (51) (52) (53) (54) (55) (56) (57) (58) (59) (60) (61) (62) (63) (64) (65) (66) (67) (68) (69) (70) (71) (72) (73) (74) (75) (76) (77) (78) (79) (80) (81) (82) (83) (84) (85) (86) (87) (88) (89) (90) (91) (92) (93) (94) (95) (96) (97) (98) (99) (100)
3	1/2" THK PLYD STR. I	8d @ 3" O.C.	550	1 1/2" @ 12" O.C. STAGG. A35 @ 8" O.C. (ONE)	1/2" @ 12" O.C.	(1) (2) (3) (4) (5) (6) (7) (8) (9) (10) (11) (12) (13) (14) (15) (16) (17) (18) (19) (20) (21) (22) (23) (24) (25) (26) (27) (28) (29) (30) (31) (32) (33) (34) (35) (36) (37) (38) (39) (40) (41) (42) (43) (44) (45) (46) (47) (48) (49) (50) (51) (52) (53) (54) (55) (56) (57) (58) (59) (60) (61) (62) (63) (64) (65) (66) (67) (68) (69) (70) (71) (72) (73) (74) (75) (76) (77) (78) (79) (80) (81) (82) (83) (84) (85) (86) (87) (88) (89) (90) (91) (92) (93) (94) (95) (96) (97) (98) (99) (100)
4	1/2" THK PLYD STR. I	8d @ 2" O.C.	730	5/16" LAG @ 6" O.C. A35 @ 8" O.C. (TWO)	5/8" @ 16" O.C.	(1) (2) (3) (4) (5) (6) (7) (8) (9) (10) (11) (12) (13) (14) (15) (16) (17) (18) (19) (20) (21) (22) (23) (24) (25) (26) (27) (28) (29) (30) (31) (32) (33) (34) (35) (36) (37) (38) (39) (40) (41) (42) (43) (44) (45) (46) (47) (48) (49) (50) (51) (52) (53) (54) (55) (56) (57) (58) (59) (60) (61) (62) (63) (64) (65) (66) (67) (68) (69) (70) (71) (72) (73) (74) (75) (76) (77) (78) (79) (80) (81) (82) (83) (84) (85) (86) (87) (88) (89) (90) (91) (92) (93) (94) (95) (96) (97) (98) (99) (100)
5	1/2" THK PLYD STR. I	10d @ 2" O.C.	870	5/16" LAG @ 4" O.C. A35 @ 8" O.C. (TWO)	5/8" @ 16" O.C.	(1) (2) (3) (4) (5) (6) (7) (8) (9) (10) (11) (12) (13) (14) (15) (16) (17) (18) (19) (20) (21) (22) (23) (24) (25) (26) (27) (28) (29) (30) (31) (32) (33) (34) (35) (36) (37) (38) (39) (40) (41) (42) (43) (44) (45) (46) (47) (48) (49) (50) (51) (52) (53) (54) (55) (56) (57) (58) (59) (60) (61) (62) (63) (64) (65) (66) (67) (68) (69) (70) (71) (72) (73) (74) (75) (76) (77) (78) (79) (80) (81) (82) (83) (84) (85) (86) (87) (88) (89) (90) (91) (92) (93) (94) (95) (96) (97) (98) (99) (100)

* USE 3x MEMBER AT SILL PLATE, AND ADJOINING PANEL EDGES, AND 1/2" EDGE DISTANCE FOR NAILING AT TOP DOUBLE PLATE STAGGER NAILS BETWEEN TWO PLATES USE ABOVE CRITERIA AT SHEAR WALLS WITH PLYWOOD ON BOTH SIDES.

1- INTERMEDIATE NAILING AT 12" O.C.
 2- ALL PLYWOOD NAILS ARE COMMON NAILS
 3- ALL DRYWALL U.N.D. SHALL BE 5/8" TH. W/ 5d COOLER NAILS @ 7" O.C. ALL EDGES.
 4- ALL PLYWOOD SHALL BE MINIMUM OF 4 PLY.
 5- PROVIDE 3x3.5/16" WASHER AT ALL 5/8" SILL BOLTS
 6- PROVIDE MINIMUM OF 3" PENETRATION FOR ALL LAG SCREWS

SECOND FLOOR FRAMING PLAN
 SCALE: 3/32" = 1'-0"
 (FIRST FLOOR SHEAR & BEARING WALLS)

- NOTES:**
- SEE S-1 & S-6 FOR GENERAL NOTES AND TYPICAL DETAILS.
 - SEE ARCHITECTURAL DRAWINGS FOR ALL FINISH DIMENSIONS AND ELEVATIONS.
 - ALL EXTERIOR STUD WALLS ARE 2-2x12 @ 16" O.C. FROM FOUNDATION TO 2ND FLOOR & 2x6 @ 16" O.C. 2ND TO ROOF. USE 2x6 @ 16" AT PLUMBING WALLS.
 - ALL INTERIOR STUD BEARING WALLS ARE 3x4 @ 16" O.C. FROM FOUNDATION TO 2ND FLOOR, AND 2x4 @ 16" O.C. FROM 2ND FLOOR TO ROOF. WALL HIGHER THAN 10' USE 3x4 @ 16" O.C. SEE ARCH'L DRAWINGS FOR STAGGERED STUD WALLS.
 - INDICATES SHEAR WALL, SEE SCHEDULE AT THIS SHEET.
 - USE "LB" HANGERS BY SIMPSON FOR ALL JOIST HANGERS.
 - USE "HW" HANGERS BY SIMPSON FOR BEAM TO BEAM CONNECTIONS.
 - PROVIDE WOOD POST UNDER ALL BEAMS, 4x4 UNDER 4x & 4x6 UNDER 6x UNO
 - ALL STEEL BEAM SHALL RECEIVE 3xFLANG WIDTH NAILER W/ 5/8" STUDS @ 24" O.C STAGG
 - MAXIMUM LUMBER MOISTURE CONTENT SHALL BE 19%
 - INDICATE MIST W/ BACKING TYP UNO
 - SEE DRAWING A-6 & A-6.1 FOR STAIR.